

Veterinary Bioresonance

The most common study of applying Veterinary Bioresonance is for dog, cat and horse. Of course, this does not exclude veterinarians from treating cattle, birds or tortoises. The fundamental frequency values are tested and harmonized in veterinary medicine can be exactly the same way as in human medicine. The holistic approach of veterinary medicine for testing and treatment animals includes four:

- Running tests for electrosmog and geopathic stress
- Testing the acid-base balance
- Testing of medication
- Testing animal fodder

Difference from human that we may not directly talk with animals, hence, the success in veterinary medicine for animal can provide a clear evidence for dismissing the so-called placebo effect, i.e. treatment success grounded in the patient's imagination.

How can sweet itch be treated with bioresonance ?

Most commonly, a horse with sweet itch (summer seasonal recurrent dermatitis) requires treatment. We can start with conduct a test by using bioresonance, and then harmonize the pre-control system of the horse to restore its body's basic capacity for regulation. The blocked frequencies and frequency spectra that were detected during testing can be harmonized through bioresonance treatment.

In many cases, the animal will already be receiving medication. If the test reveals good tolerability, the medication can be continued. However, if you are looking for better-tolerated alternatives for detoxification and the excretion of toxins, you may further investigate of using bioresonance. If toxins are consumed via soiled fodder or contaminated drinking water; hence, testing the fodder and drinking water of animals is an important building block in securing a successful treatment. By means of the fodder test, the horse's fodder can be checked and optimized. By improving the quality of the fodder, the animal's metabolism is relieved as fewer waste products are created, which in turn also relieves the liver and the kidneys.

Testing the acid-base balance provides us with information on the current status of the body's acid-base balance. In the case of sweet itch, this balance has definitely been shifted towards over-acidification. A supportive measure is the addition of an alkaline mineral fodder which can rapidly address the excessively acidified milieu of the intestine.

If there are indications for electrosmog or geopathic disturbances, you can simply suggest changing the house's box. Any further measures, such as installing an electrosmog modulator or duplex device, can also be considered.

Testing Medications

The classic approach for bioresonance testing by using the example of a dog with liver damage is as below:

1. The dog is connected to the bioresonance device via a detector.
2. You enter the fundamental frequency value for the liver of a dog, which is 56.25.

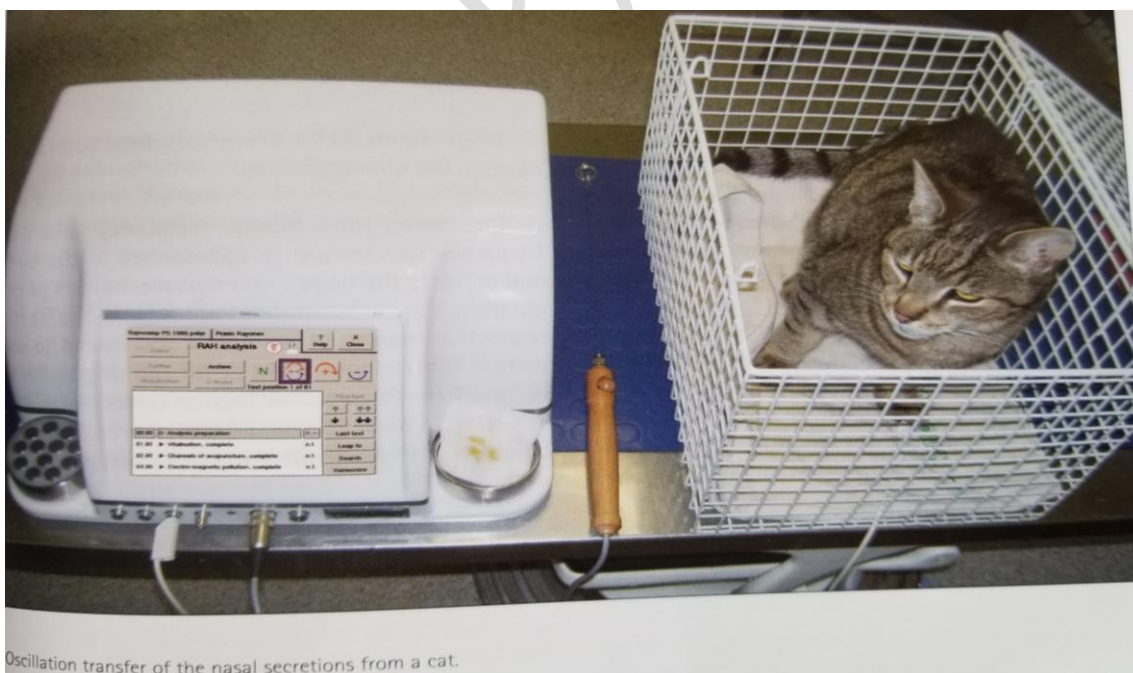
3. The Polarizer tester should be set to N. If Rayotensor shows a linear motion, then a disturbance is present.
4. If you new place a sample of medication into the protective cup. The test will indicate whether the substance-specific frequency spectrum of the medication is capable of supporting the harmonization of the disturbed fundamental frequency value. If we find the drug has disturbance, we has to change the drug.

Oscillation transfer from urine, stool, blood and saliva

A treatment plan for a cat suffering from cat flu may be as following. It is a harmonization procedure by a detoxification program to support the process of excretion.

1. The cat is placed in a cat basket.
2. This basket is lined with a surface detector, on which the cat is sitting.
3. This detector is connected to the testing device.
4. The cat is treated with a pre-control program.
5. A swab of nasal secretion is placed into the measuring cup.
6. The transfer frequencies are entered and the Polariser set to +/-.
7. When Polariser rotating at setting to N, harmonization has been completed.
8. Select a program that support the liver, kidneys, or detoxification, and follow treatment (e.g. apply tablets 3 times a day, or increase treatment interval to once a week until the symptoms has been reduced significantly).

In the treatment of animals, the same principles apply when using other bodily secretions, such as blood, faeces or saliva.



Energizing frequency carriers or Energy Duplication

As determined the treatment frequency, by storing these frequency values in a carrier substance – water, lactose tablets, such as globules – you can extend and support the effect of bioresonance treatment perfectly. With regard to animal treatments, energizing a carrier substance that has been placed in the measuring cup, in parallel to running a program-based treatment has proven useful in practice, with polarizer is set to +/- . Alternatively, the original substance is placed into the protective cup, the transfer frequencies are entered; five minutes later (or more), the frequency spectrum of the original substance will be transferred to the globules. Lactose tablets have proven reliable for horses and dogs, whereas birds, rabbits and other small rodents can be given energized water in their drinking containers. A few drop of water are sufficient to transfer the information into the animal's body. The crucial efficacy factor here is not the amount of information that is administered, but the frequency of the information impulse.

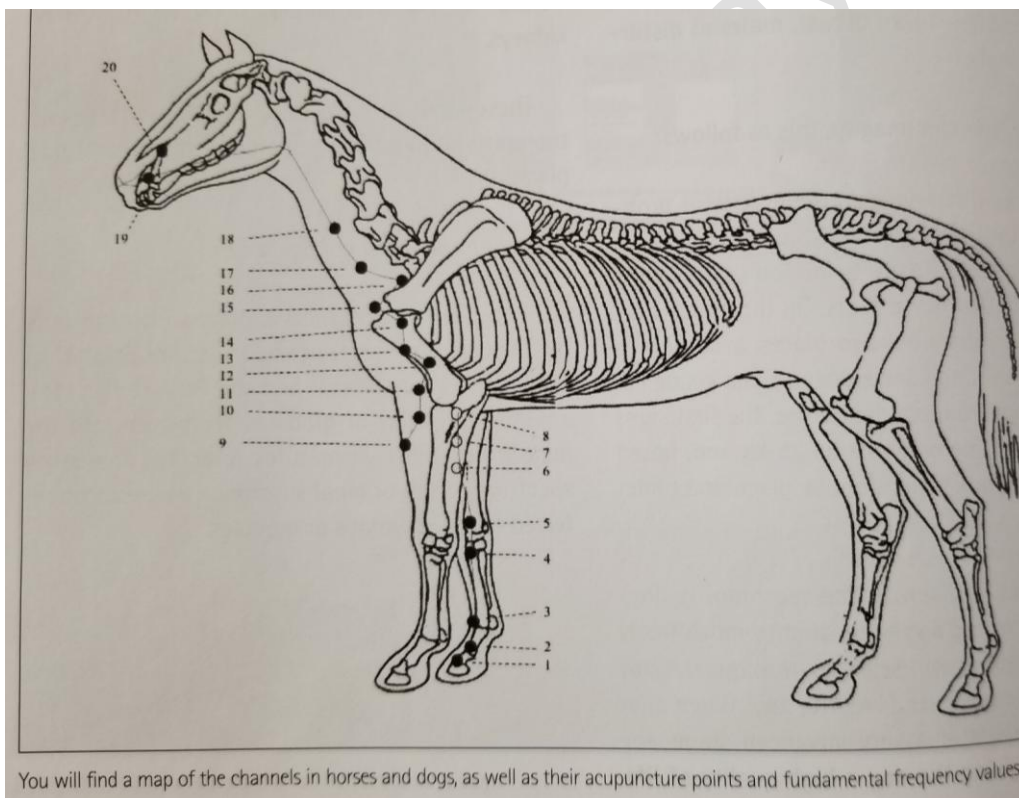


Energising Rayotabs during the harmonisation of a dog.

Testing and Harmonizing Acupuncture Channels

In traditional Chinese medicine, the body of an animal is viewed as a whole and diseases are thought to arise from an energy imbalance. An initially minor energy disturbance progresses to become a manifest disease. Resolved energy blockages and balanced energy flow promotes the powers of self-healing, improves circulation, encourages the release of endorphins, soothes pain and relieves cramping. It is good to treated pain, chronic illnesses and behavioural problems. The working procedure of bioresonance treatment is as below:

1. Found out which channel is disturbance and whether this is a disturbance of energy over- or undersupply (one refers to the channel being full or empty); most important to find out the blocked point.
2. If you require a + polarity to harmonize a blocked channel point, this means that, at the time of testing, the relevant point has too little energy, it is empty. Supplying a + polarity will compensate for this, i.e. harmonization will be achieved. If you require a – polarity to harmonize a blocked channel point, this means that, at the time of testing, the relevant point has too much energy. It is full. Supplying a – polarity will compensate for this.
3. Either connecting the animal to the device via a surface detector, or to test the channel point directly on the animal. Start the frequency until harmonization reach.



You will find a map of the channels in horses and dogs, as well as their acupuncture points and fundamental frequency values!

Reference Book: Bioresonance according to Paul Schmidt introduction – Devices – Application
(Prof. Dietmar Heimes)