

Title: Procedure to Use Spooky2 to treat Cancer via Spooky2 Central/Plasma Unit

Summary

Date: 2012/6/26

The Spooky2 Rife System offers two main routes to tackle cancer. The first uses Plasma Mode as its principal weapon, and the second one Contact Mode. Both of these are adjuncted by Remote Mode.

Contents

1.	Device Connection and Preparation	1
1.1.	Connect the set of Central/Plasma unit with Generator XM.....	1
1.2.	Pay attention as using Plasma Tube	2
2.	Start Spooky2 Software.....	3
3.	Procedure of Cancer Treatment via Spooky2 Plasma	6
3.1.	Hardware Requirement as using Plasma Tube	6
3.2.	Work out the Plasma Presets Value	6
3.3.	Cancer Protocol with Plasma	7
3.4.	More detail to run program on Generator 1 & 2	8
4.	Reference	9
4.1.	Screen Dump to Run Remote continuously for whole operation cycle.....	9
4.2.	Screen Dump to Run for the Terrain with Plasma (according to table in section 3.2).....	9
4.3.	Run Remote program while stop Plasma (P01-08 → R01-08).....	11
4.4.	Screen Dump to Scan via contact mode Generator X.....	11
4.5.	Screen Dump to Run for the My Scan, My Target, etc via contact mode Generator X + Plasma ...	12
5.	Appendix:	13

1. Device Connection and Preparation

1.1. Connect the set of Central/Plasma unit with Generator XM



1.1.1. Connect your generator to Spooky Central/ Plasma. Out 1 goes to Input, and Out 2 connects to Modulation.

1.1.2. For Spooky Central, connect your ultrasonic transmitter to the short adaptor plug, then insert this into the Ultrasonic socket.

1.1.3. For Spooky Central connect your Hand Cylinders or TENS pads to the short adaptor cable, then connect it to Contact.

1.1.4. For Spooky Central connect your PEMF coil to Coil.

Note: Spooky Central/Plasma is available with either a straight tube (pictured) or a Phanotron tube.

1.1.5. Connect your plasma tube to the rear high voltage sockets.

1.1.6. Connect your mains electrical cable to the socket on the rear of the machine. Check that the power switch is set to the 0/Off position, then plug the cable into the wall power socket.

1.1.7. Use the special USB cable that's coiled around the metal ring to connect your PC to the Spooky2–XM generator that's connected to Spooky Central/ Plasma. Do NOT uncoil it or remove the metal ring.

1.1.8. Now switch on Spooky Central/Plasma. The power light will illuminate orange. The order of setting up Spooky Central/ Plasma important, making sure the unit is not turned on until the connections are finished.

Video: how to set up hardware and software for Spooky Central.

<https://www.youtube.com/watch?v=27IEjvmrNWA&t=1s>

1.2. Pay attention as using Plasma Tube

1.2.1. Placement: when you run plasma for long periods, the tube can get very hot. To prevent this, don't put it under the covers but on top of them. Doing this means the tube stays relatively cool – but can fall off the bed. So I've pushed my bed up against the wall. I place the tube close to the wall, and fall asleep with my back against it. **The best and most secure way I've found so far to use the Ultrasonic transmitter is to place it between my thighs with its diaphragm directly against my perineum.** If you move around the bed a lot while you sleep, you may have to find another way – in the armpit may be more viable. Spooky Central's fan is very like white noise, but if it bothers you, use wax earplugs. And a sleeping mask if you find the light troublesome.

1.2.2. Placement: no rearrangement of furniture is required, but it's a good idea to keep the PC within reach of your bed with its **screen set to sleep after three minutes.** Attach one TENS pad to your left foot just below the outside ankle, and another to the back of your right hand. You may wish to use a woollen or silk bed-sock and a glove to keep the pads secure – not leather or latex.

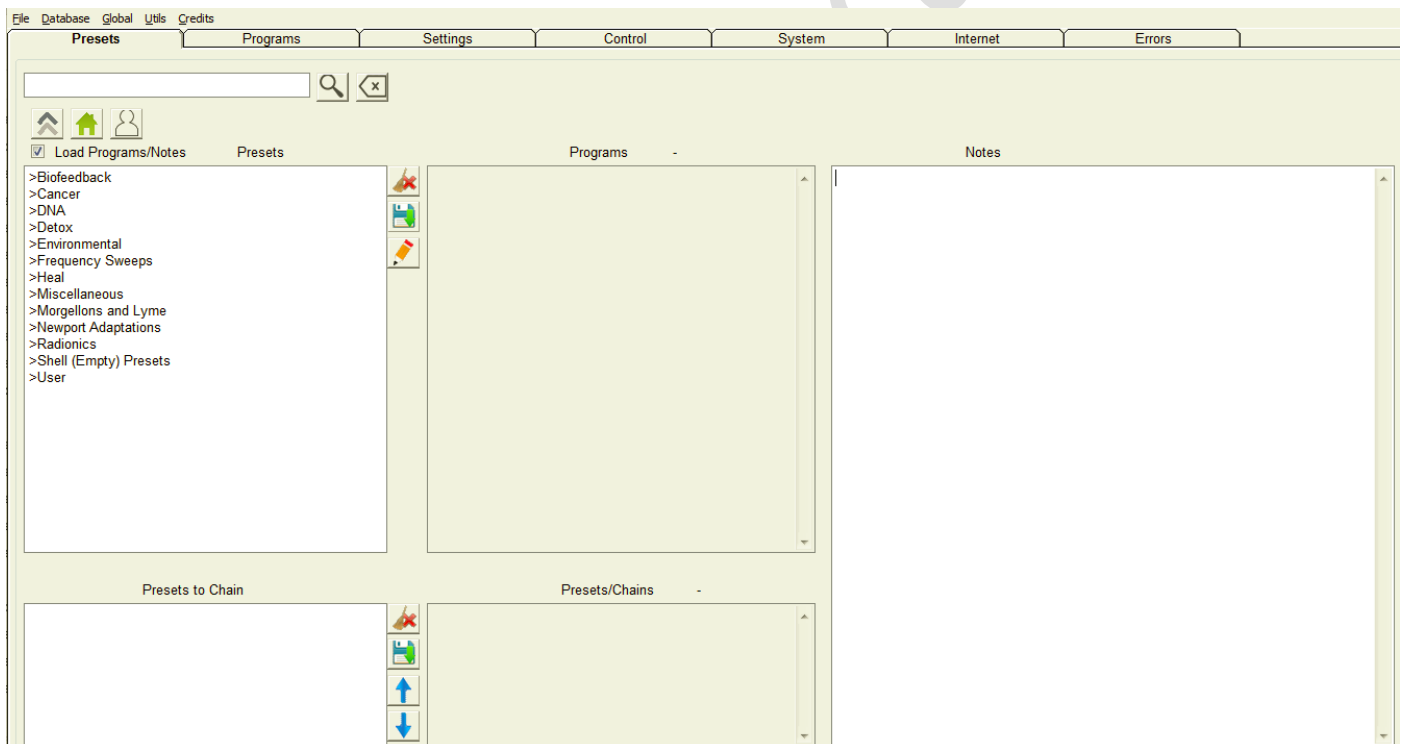
1.2.3. General: every time you need to visit the bathroom, answer the phone, cook or eat, you will have to click **Pause** in Spooky2, and **remove** TENS pads if using Contact Plus. When you're ready to resume, reapply the pads and click Pause again. If your absence will be fairly long, you can also **switch off Spooky Central** if using it – but don't switch off generators or quit Spooky2. Never disconnect the TENS pad cable while the machine is switched on. So, the first thing to do is to switch off Spooky2 Central/Plasma. Then you can peel off the TENS pads, go to the PC and click Pause. On return, click Pause again and reapply the TENS pads and turn Spooky Central/Plasma on again.

In either plan, if you do't get enough time during the day to complete the preset, you can **stop** the generator, then use the **Resume** button next day to restart where you left off. Leave your remote generators running their current presets until you finish that contact or plasma preset.

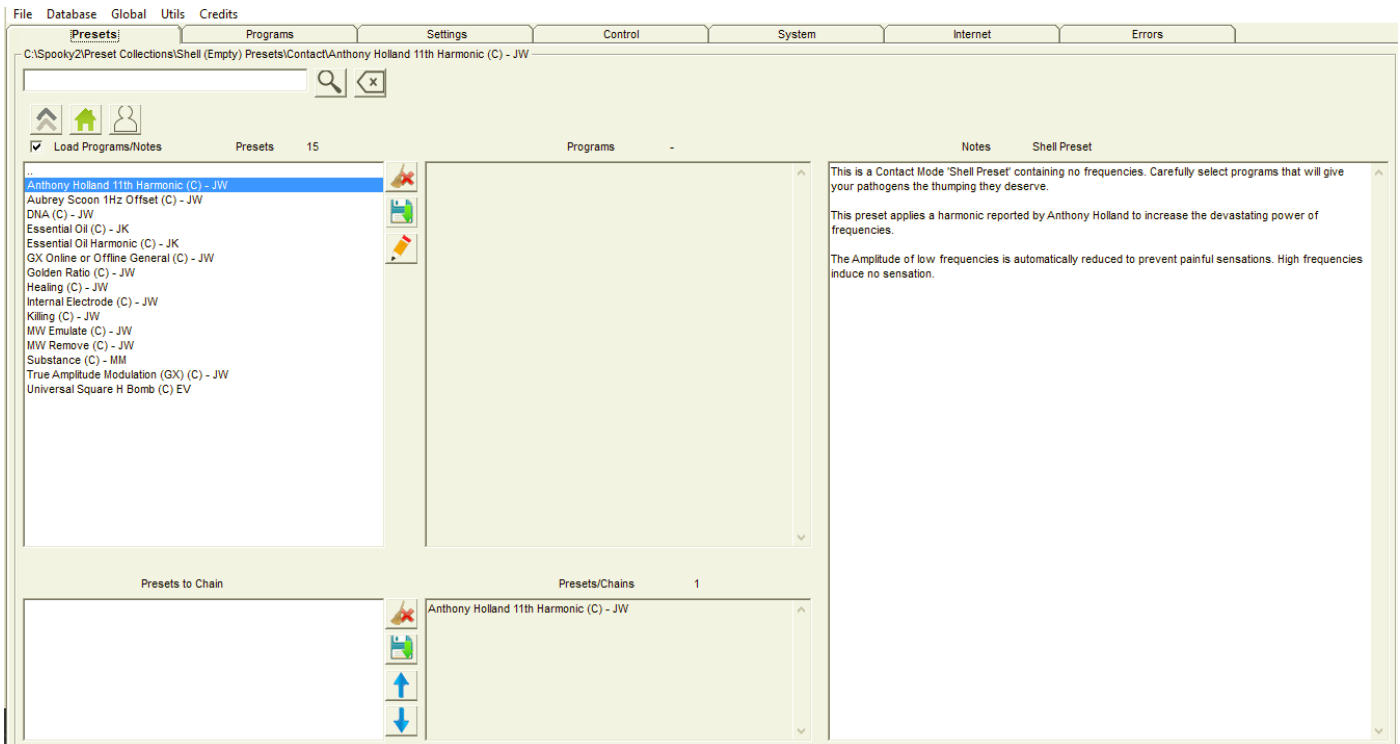
Do not turn off any generators unless you're going to turn them all off. Switching off individual generators in a rig will cause Spooky2 to report communications errors at a prodigious rate which can affect the smooth operation of the other generators. Leaving unused generators switched on doesn't use very much electricity - less than a night-light. However, Spooky Central can safely be switched off without affecting the rest of the rig.

2. Start Spooky2 Software

Now we'll take a quick look at the interface. Note that if you rest your mouse pointer on any Spooky2 control or value field, a simple and informative tooltip will appear explaining it. The main window has 7 tabs – *Presets, Programs, Settings, Control, System, Internet and Errors*. The first screen you'll see is the *Presets* tab. Choose a *Preset Collection* on the left to display its presets in the same column. Select a preset to display its Notes, Estimated Total Run Time, or "Shell Preset" status. If it's not a *Shell Preset*, its programs will display in the central *Programs* column.

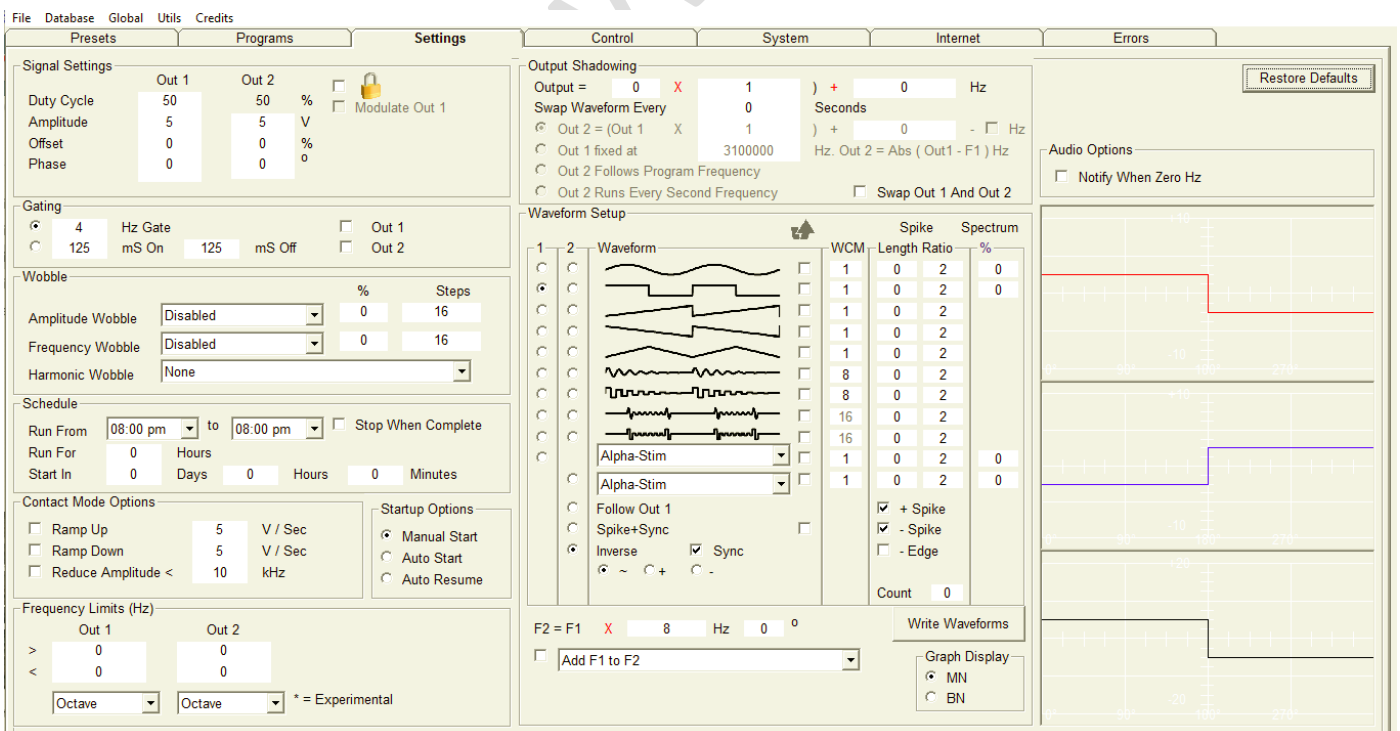


Now click the Programs tab to see this:



Frequency sets are called *Programs*, and *multiple Programs* are *Sequences*. The top field displays all programs in all databases for *Search* or scroll-through (click inside the field to use a scroll-wheel). Double click programs to load into the *Loaded Programs* column lower left. Then set *Repeat Each Frequency* and other settings.

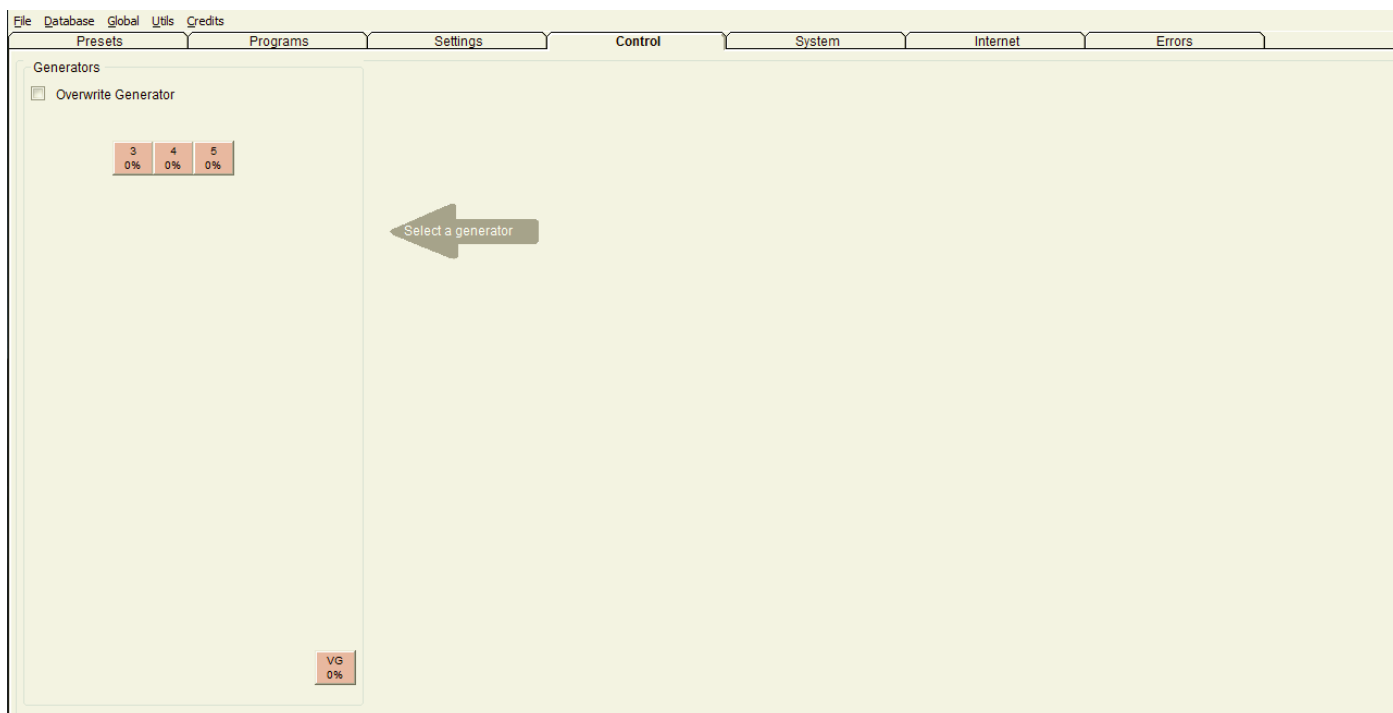
To tweak waveforms and other settings, click the *Settings* tab:



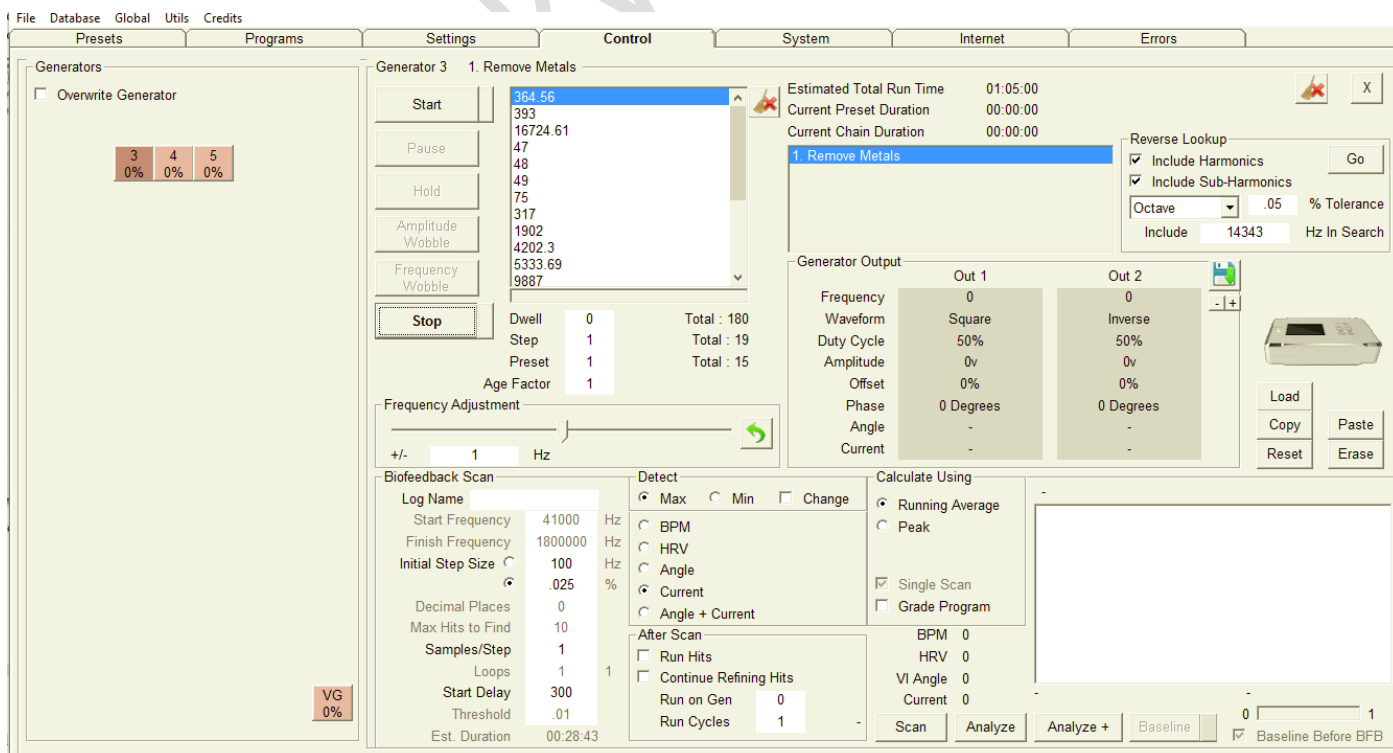
If you load a preset first, then click in here, you'll see the settings already programmed for you. While you're free to change these as you wish, we strongly recommend that you don't alter any Spooky Central/Plasma presets unless you know exactly what you're doing. However, you're always free to alter

settings in the Schedule and Audio Options panes.

Now click the Control tab to see this:



The Generators pane on the left shows your Generator Buttons. The center and right of the tab is blank because we must select a generator to display. Tick Overwrite Generator, then click the generator you want. The tab will then display this: The Generator Control Panel – note the button color change. From here, you Start, Pause, and Stop your generators, apply toggled Wobbles, check Generator Output, adjust the currently transmitting frequency up or down, Reset your generator, perform a Biofeedback Scan, and do a Reverse Lookup of the frequencies detected.



3. Procedure of Cancer Treatment via Spooky2 Plasma

3.1. Hardware Requirement as using Plasma Tube

- Plasma Plus Spooky Central/Plasma + Remote with 2 generators XM (or 1 generator X and 1 Generator XM)

3.2. Work out the Plasma Presets Value

3.3.1 Usage of 1 generator for remote detox programming all the time

3.3.2 Usage of another generator for plasma connection and treatment with its protocols have two phases — Terrain and Target. The Terrain phase is much like the Terrain protocol in that it does general cleanup of your internal terrain. The second phases of the protocol, the Target phase, will clean up specific bacteria and viruses and cancers customized specifically for you. For the target phase you need to create 2 presets. The first preset has frequencies from a biofeedback scan. The second preset you will choose cancer programs from the Spooky2 database that target your specific cancer. For Spook Pulse users, take the scans specified in the 1st and 2nd rows of the table. If you have Generator X, you only need to take one scan, specified in the 3rd row of this table.

Scanning For	Use Biofeedback Preset
Bacteria and Viruses	\Biofeedback\Spooky Pulse\General\ALL Full System Scan - DB \Biofeedback\GeneratorX\General Biofeedback Scan (C) - JW \Biofeedback\Sample Digitizer\General Biofeedback Scan (SD) - JW Cancer
Cancer	\Biofeedback\Spooky Pulse\Cancer\High Freq Scan 11000000-13000000 (C)(R) - EV.txt
Bacteria and Viruses and Cancer	\Biofeedback\GeneratorX\GX General Biofeedback Scan (C) - JW.txt

3.3.3 Build a preset called **My Scans**, choosing *\Shell (Empty) Presets\Plasma\Spooky Plasma Advanced (P)- JW*. Add your scan program(s) into your preset and save the preset with the name My Scans. You may want to update these scans weekly. For the Cancer biofeedback scan, since it only takes about 11 minutes, you may opt to update more often. Similarly, because the Generator X biofeedback scan only takes 26 minutes, you may opt to update the program more often.

Also create a specific cancer preset that is customized for your specific cancer. Start with the shell preset in the table above, go to the Programs tab in Spooky2, search for programs for your specific cancer, add these programs to your preset, and save your preset as **My Target**.

After you finish the protocol the first time, you can then repeat the Target phase. For the Remote portion of the protocol, you will need to skip to the Target phase. To do this on Day 19, load the Remote preset into a Generator control, type a preset number “22” into the Preset text field, type Tab, and then click Start.

3.3.4 When you’re building remote presets, always keep your presents to a maximum of four to four and a half hours at most.

3.3.5 SC Contact Mode (i.e from Plasma), standard Contact Mode, or PEMF should never be used by people with pacemakers or electronic implants.

3.3.6 Plasma tubes emit two fields – near-field and far-field. The first extends about six inches in all directions from the tube, and it’s very powerful. After six- inches, it becomes far-field.

3.3.7 Drink at least three litres of pure water dially.

3.3. Cancer Protocol with Plasma

For the Plasma plus version of the protocol, you run plasma presets (as described in section 3.2) and hardware on Generator 1, and a single remote preset and remote hardware on Generator 2. As a full cycle of treatment as shown in below table, with the plasma hardware on Generator 1, on days 19-24, the first treatment of the day is My Scans. On days 20, 22, 24, the second treatment is My Target. On days 19-25 the subsequent treatments are listed in the table below. After the 2 hour treatment is over, Spooky beeps to let you know the treatment is over. During the Target phase, when Generator 1 is not in use you can optionally swap the hardware on Generator to Spooky Remote and run */Cancer/Remote/Cancer Advanced (R) - JW* if you have the Spooky2-XM, or run */Cancer/Remote/GX Cancer (R) - JW* if you have Generator X.

Day	Phase	Generator 1	Generator 2
1	Terrain	Plasma2/Gen1/Metals and Chemicals (P) - BY	Plasma2/ Gen2 (R) – BY
2		Plasma2/Gen1/Metals and Chemicals (P) - BY	
3		Plasma2/Gen1/System Detox 1 (P) - BY	
4		Plasma2/Gen1/System Detox 1 (P) - BY	
5		Plasma2/Gen1/System Detox 2 (P) - BY	
6		Plasma2/Gen1/System Detox 2 (P) - BY	
7		Plasma2/Gen1/Liver (P) - BY	
8		Plasma2/Gen1/Liver (P) - BY	
9		Plasma2/Gen1/Kidney 1 (P) - BY	
10		Plasma2/Gen1/Kidney 1 (P) - BY	
11		Plasma2/Gen1/Kidney 2 (P) - BY	
12		Plasma2/Gen1/Blood Liver Kidney (P) - BY	
13		Plasma2/Gen1/Blood Liver Kidney (P) - BY	
14		Plasma2/Gen1/Parasites & Lymph (P) – BY	
15		Plasma2/Gen1/Parasites & Lymph (P) – BY	
16		Plasma2/Gen1/Immunomodulators (P) - BY	
17		Plasma2/Gen1/Immunomodulators (P) - BY	
18		Plasma2/Gen1/Immunomodulators (P) - BY	
19	Target	My Scans Plasma2/Gen1/Cancer 1 (P) – BY	
20		My Scans My Target Plasma2/Gen1/Immune System (P) - BY	
21		My Scans Plasma2/Gen1/Cancer 2 (P) - BY	
22		My Scans My Target Plasma2/Gen1/Immune System (P) - BY	
23		My Scans Plasma2/Gen1/Cancer 1 (P) - BY	

24		My Scans My Target Plasma2/Gen1/Immune System (P) - BY	
25		/Cancer/Plasma/Spooky Central Cancer Overnight Sweep - JW.txt	

3.4. More detail to run program on Generator 1 & 2

Phase I – Terrain

Run	Spooky Scalar Treatment (day or night as desired)	Remarks	Generator 1 (if not running SC far-field)	Generator 2
X2	P01 Metals & Chemicals – DB	+ SC Contact and Ultrasonic for near	> R01 Metals & Chemicals – DB	R01 Metals & Chemicals – DB (Run For = 48 hours) (or run Plasma2/ Gen2 (R) – BY as section 3.3)
X2	P02 System Detox – DB	+ SC Contact and Ultrasonic for near	> R02 System Detox – DB	R01 Metals & Chemicals – DB (Run For = 48 hours) (or run Plasma2/ Gen2 (R) – BY as section 3.3)
X2	P03 Liver & Kidneys – DB	+ SC Contact and Ultrasonic for near	> R03 Liver & Kidneys – DB	R01 Metals & Chemicals – DB (Run For = 48 hours) (or run Plasma2/ Gen2 (R) – BY as section 3.3)
X2	P04 Blood & Lymph – DB	+ SC Contact and Ultrasonic for near	> R04 Blood & Lymph – DB	R01 Metals & Chemicals – DB (Run For = 48 hours) (or run Plasma2/ Gen2 (R) – BY as section 3.3)
X2	P05 Immunomodulators – DB	+ SC Contact and Ultrasonic for near	> R01 Metals & Chemicals – DB	R01 Metals & Chemicals – DB (Run For = 48 hours) (or run Plasma2/ Gen2 (R) – BY as section 3.3)

Note: Plasma2/ Gen2 (R) – BY is the collection of all programs of 25 days.

Phase II - Target

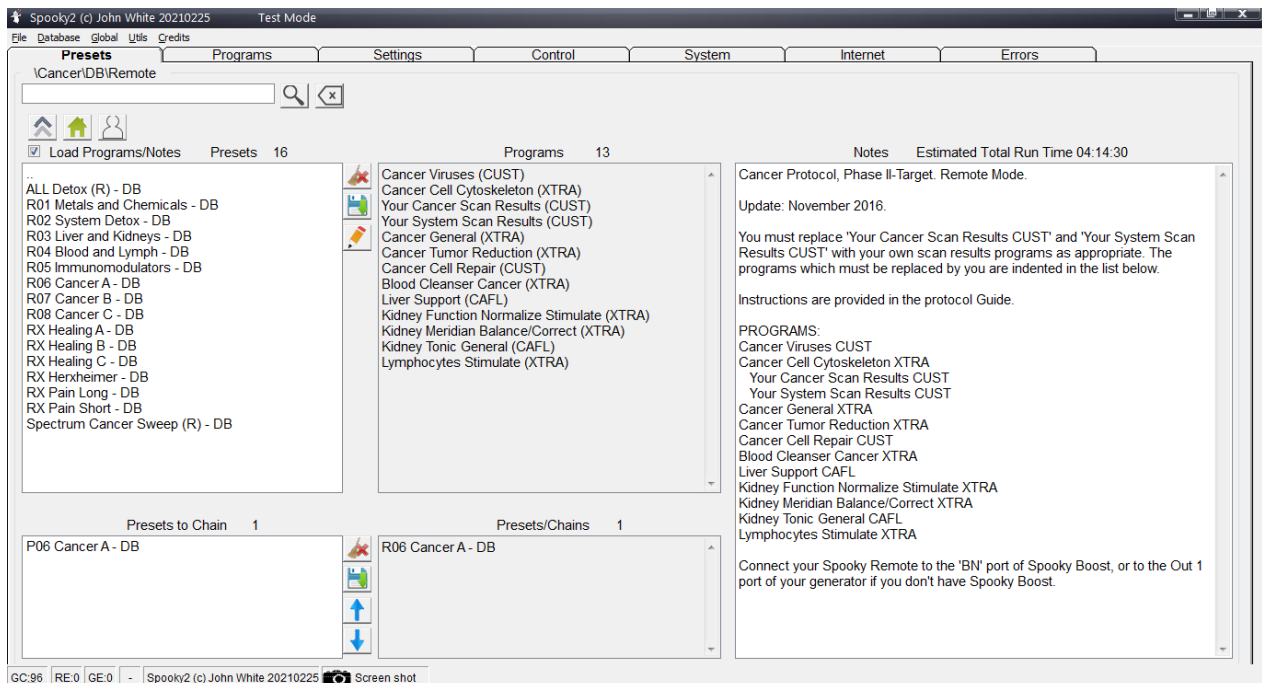
Run	SC Near-field/Far-field (day or night as desired)	Remarks	Generator 1 (if not running SC far-field)	Generator 2
Scan		Biofeedback scans x 2		Edit P06 & R06 presets
x4	P06 Cancer A – DB	+ SC Contact and Ultrasonic for near-field only	> R06 Cancer A – DB (or run /Cancer/Remote/ Cancer Advanced (R)-JW of Spooky2-XM as section 3.3)	ALL Detox (R) – DB (Run non-stop till protocol is done) (or run Plasma2/ Gen2 (R) – BY as section 3.3)
Scan		Biofeedback scans x 2		Edit P07 & R07 presets
x4	P07 Cancer B – DB	+ SC Contact and Ultrasonic for near-field only	> R07 Cancer B – DB (or run /Cancer/Remote/ Cancer Advanced (R)-JW of Spooky2-XM as section 3.3)	
Scan		Biofeedback scans x 2		Edit P08 & R08 presets
x4	P08 Cancer C– DB	+ SC Contact and Ultrasonic for near-field only	> R07 Cancer C – DB (or run /Cancer/Remote/ Cancer Advanced (R)-JW of Spooky2-XM as section 3.3)	
X2	P09 Cancer Sweep (P) – JW	+ SC Contact and Ultrasonic for near-field only	> Spectrum Cancer Sweep – DB (SC off & disconnect)	

Plasma, PEMF, and Ultrasonic are all safe to use on the head and neck. However, both SC Contact Mode and standard Contact Mode should not be used in these areas. Place a TENS pad on each shoulder close to the base of the neck instead.

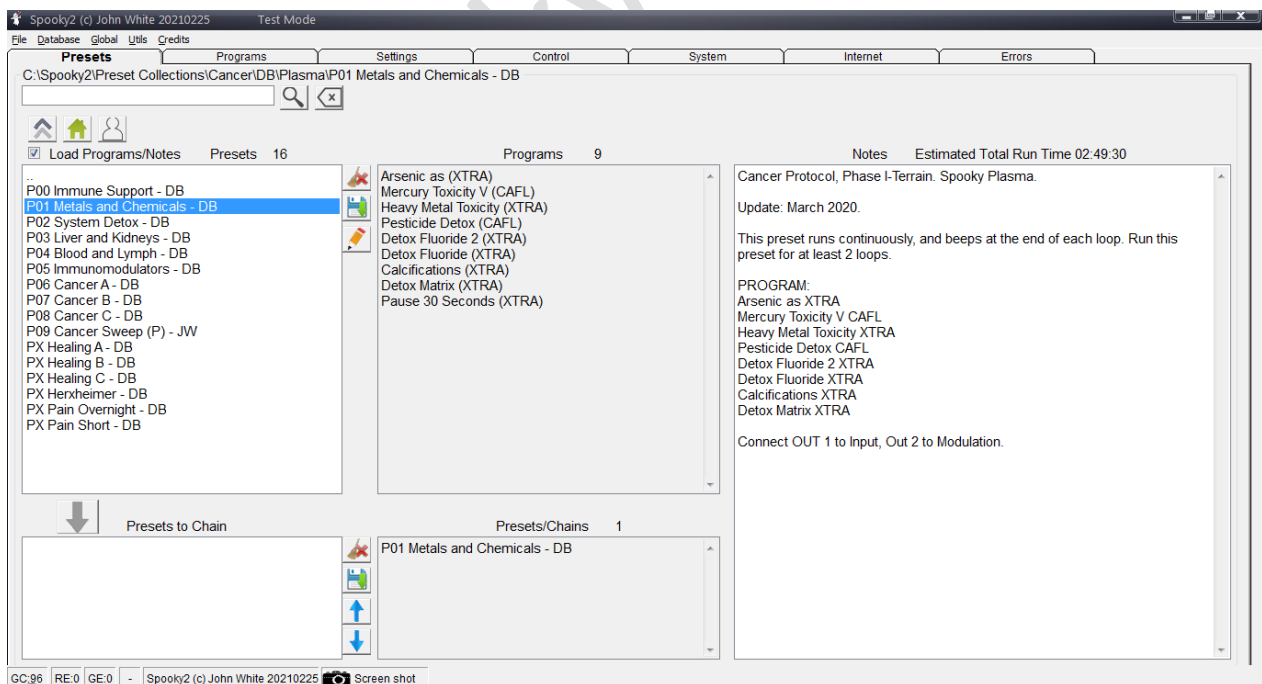
Caution: SC Contact Mode, standard Contact Mode, or PEMF should never be used by people with pacemakers or electronic implants.

4 Reference

4.1 Screen Dump to Run Remote continuously for whole operation cycle



4.2 Screen Dump to Run for the Terrain with Plasma (according to table in section 3.2)



Loop it twice as below setting:

The screenshot shows the Spooky2 software interface in Test Mode. The 'Settings' tab is active, and the 'Stop When Complete' checkbox is highlighted with a red box. Other visible settings include:

- Signal Settings:** Out 1 and Out 2 settings for Duty Cycle (50%), Amplitude (10V), Offset (0), and Phase (0).
- Gating:** 3.6 Hz Gate, 138.9 mS On, 138.9 mS Off.
- Wobble:** Amplitude Wobble (Disabled), Frequency Wobble (Disabled), Harmonic Wobble (None).
- Schedule:** Run From (Midnight) to (Midnight), Stop When Complete (checked).
- Control Mode Options:** Ramp Up (4 V/Sec), Ramp Down (4 V/Sec), Reduce Amplitude (< 10 kHz).
- Frequency Limits (Hz):** Out 1 (0), Out 2 (3000000).
- Control Tab:** Output Shading (Output = 0, Swap Waveform Every 0 Seconds), Waveform Setup (Square_100_Percent_Off), and Graph Display (MN).

The screenshot shows the Spooky2 software interface in Test Mode, displaying the 'Generators' and 'Biofeedback Scan' sections. The 'Run Cycles' field is highlighted with a red box.

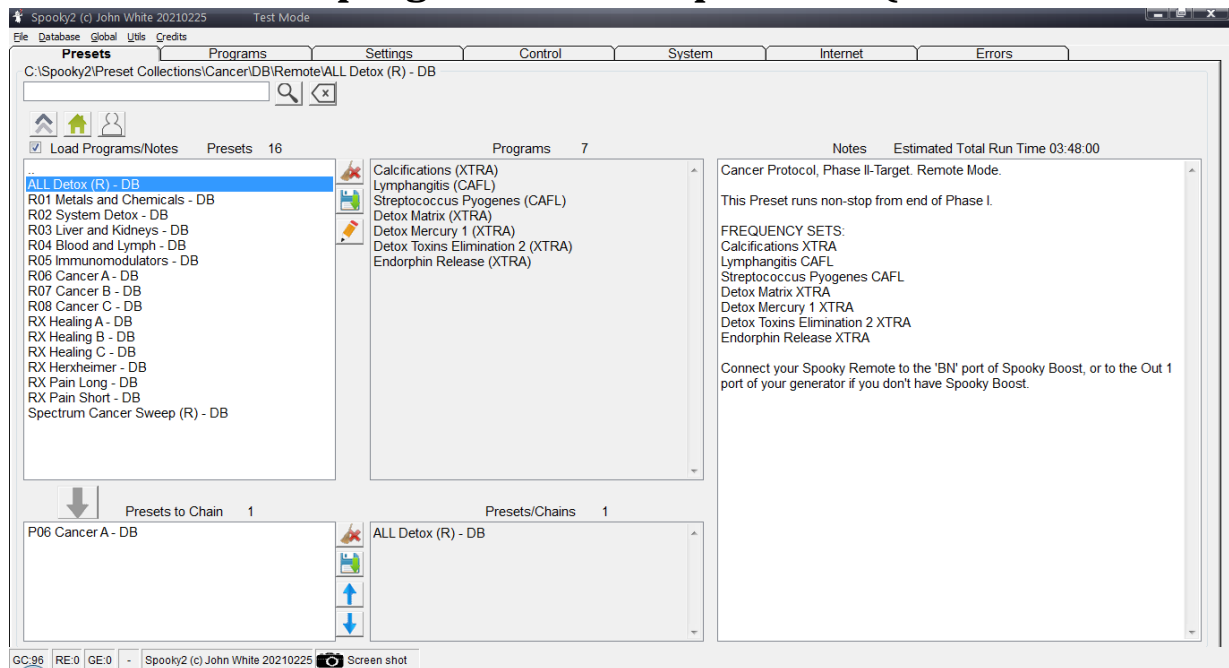
Generators Section:

- Generator 1: P03 Liver and Kidneys - D8
- Estimated Total Run Time: 01:28:30
- Current Preset Duration: 00:00:00
- Current Chain Duration: 00:00:00
- Generator Output: Out 1 (Square, 50% Duty Cycle, 0V Amplitude, 0 Degrees Phase), Out 2 (Square, 50% Duty Cycle, 0V Amplitude, 0 Degrees Phase).

Biofeedback Scan Section:

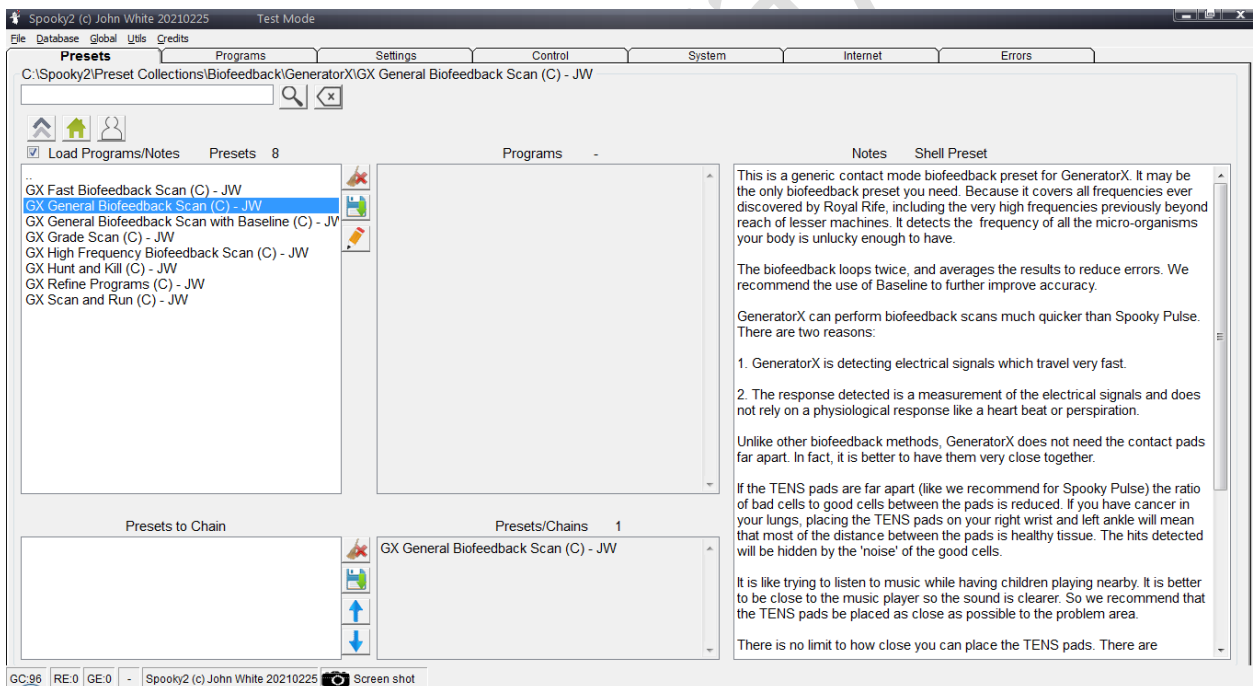
- Log Name: (empty)
- Start Frequency: 1500000 Hz
- Final Frequency: 1700000 Hz
- Initial Step Size: 375 Hz
- Decimal Places: 0
- Max Hits to Find: 10
- Samples/Step: 1
- Loops: 1
- Start Delay: 30
- Threshold: 01
- Est. Duration: 02:20:31
- Detect: Max (checked), Min, Change
- Calculate Using: Running Average (checked), Peak
- Run Cycles: 2 (highlighted in red)

4.3 Run Remote program while stop Plasma (P01-08 → R01-08)

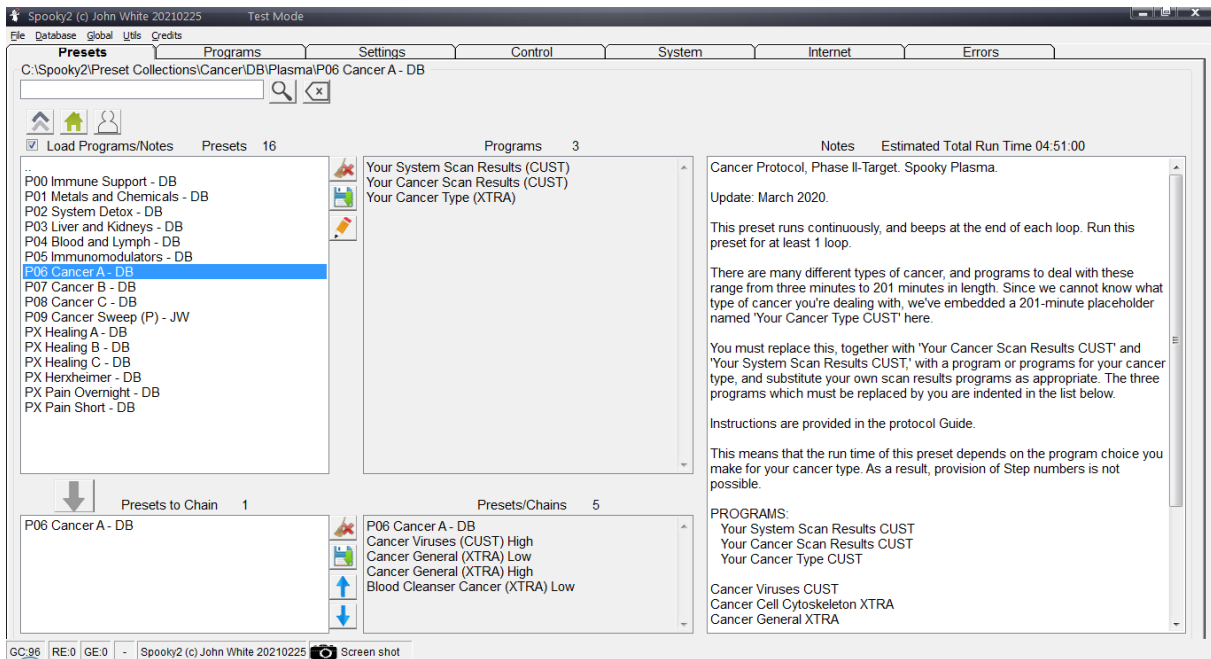


4.4 Screen Dump to Scan via contact mode Generator X

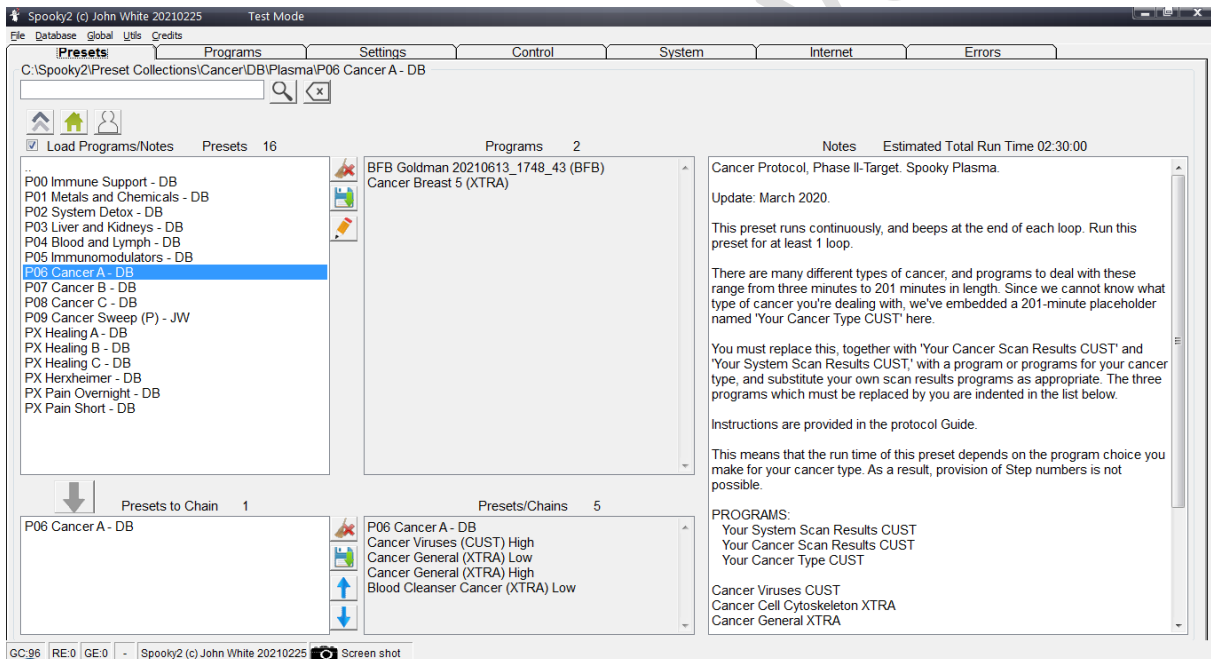
TENS pads be placed as close as possible to the problem area (e.g. both side of your torso at belly level, or around your tumor) without Plasma on. Remember to input Name before scan, save the result with filename "BFB Cancer YI 20200630", and advise to rescan weekly (at lease).



4.5 Screen Dump to Run for the My Scan, My Target, etc via contact mode Generator X + Plasma



Replace your BFB file and Cancer Type file, then save for further use with name (e.g. P08-Cancer-YI-20210607).



5 Appendix:

5.1. Using far field and scalar energy of Spooky Plasma

I can simply run Spooky Plasma's plasma tube on its own during the day, using the same preset. As long as I remain within my home, I receive far-field treatment which will vary in power depending on how near I am to the tube. I've killed mold on fruit placed 10 feet away from the tube in less than 16 hours, so this is powerful stuff.

And because plasma tubes also emit scalar energy, I place a tape containing my fingernail beneath the tube. Doing this allows me to leave my home and still receive remote treatment from the plasma tube.

5.2. Safety Attention

To use the Spooky2 Rife System safely, you **MUST**:

Always connect your Spooky2–XM and GeneratorX frequency generator to an electrical outlet and powered on before attempting to use it. Don't use USB only. **Never** unplug it while in use – always stop and switch it off first.

Ensure that plug socket adaptors cannot be accidentally kicked or nudged by cleaning/vacuuming, small children, or curious pets, causing momentary disconnection.

Failure to observe these precautions at all times may result in damage to your generator and will void your warranty.

5.3. CancerTool Guide

<http://www.spooky2tools.com/cancertool-guide/#more-117>

5.4. CancerTool Setup and Guide

http://www.spooky2tools.com/Public/CancerTool_Setup.exe.zip

[http://www.spooky2tools.com/Public/GUIDE_CancerTool - Click Me.pdf](http://www.spooky2tools.com/Public/GUIDE_CancerTool_-_Click_Me.pdf)

-END-