

# Spooky2頻率機應用介紹會

編制者：Goldman Au

編制日期：20 Sept 2021



# Spooky2頻率機應用介紹會

日期：2021年 10月 9日（星期六）

時間：2:00 - 3:30 pm

語言：粵語

講者：Goldman

Zoom online在線會議

聯繫查詢：[support@spooky2-mall.com](mailto:support@spooky2-mall.com)

[https://us02web.zoom.us/webinar/register/WN\\_WjOIRCPLQZO3D3pvSUGYsg](https://us02web.zoom.us/webinar/register/WN_WjOIRCPLQZO3D3pvSUGYsg)

## 議程

1. 分享講者對頻率保健設備的使用體驗 (10 min)
2. 介紹應用頻率設備的科學原理 (15 min)
3. 介紹Spooky2頻率設備的配件及應用範疇(接觸式、遙距式、線圈、冷激光) (20 min)
4. 介紹Spooky2軟件的操作應用 (15 min)

誠意邀請對Spooky2頻率設備應用於保健方面有興趣的人仕參加，亦適合對頻率治療有研究的人仕，分享交流經驗，歡迎報名參加。

謝謝！



# 免責聲明

頻率治療並非傳統和官方認可的治療方法，  
只可視為輔助和保健養生的方法，本講座所  
提及的內容，亦不代表治療承諾，如遇醫療  
問題，建議諮詢你的醫生尋求專業意見。



# 第一節

## 頻率保健設備的使用體驗 (10分鐘)



# 講者對頻率設備的使用體驗 I

## 治療慢性背痛的體驗



- 頻率電療可有效舒緩肌筋痛症
- 若能查找痛症的主因，選擇正確治療方法，效果才更顯注，以下介紹其中一種背痛的頻率治療方法:

<https://www.youtube.com/watch?v=Xxhz9OJRDNM&t=9s>

# 講者對頻率設備的使用體驗 II

## 治療鼻敏感的體驗



- 致敏原影響人體- >人體是具有生化反應的物種
- 細胞構成人體，DNA是人類的生命密碼，皆帶有頻率

# 講者對頻率設備的使用體驗 III

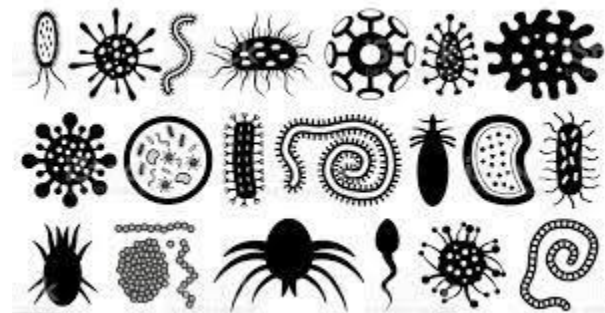
## 排毒的體驗



- 可以用Spooky2頻率機長期運行Terrian排毒程式 ->有機會減少患瘡及疥滋的困擾
- “有益的水” 對排毒十分十分重要

# 講者對頻率設備的使用體驗 IV

- 頻率設備可用於癌症患者
  - 頻率設備可用於貓狗
  - 頻率設備可用於鳥類
- 等等...





# 第二節

## 頻率設備的科學原理 (15分鐘)

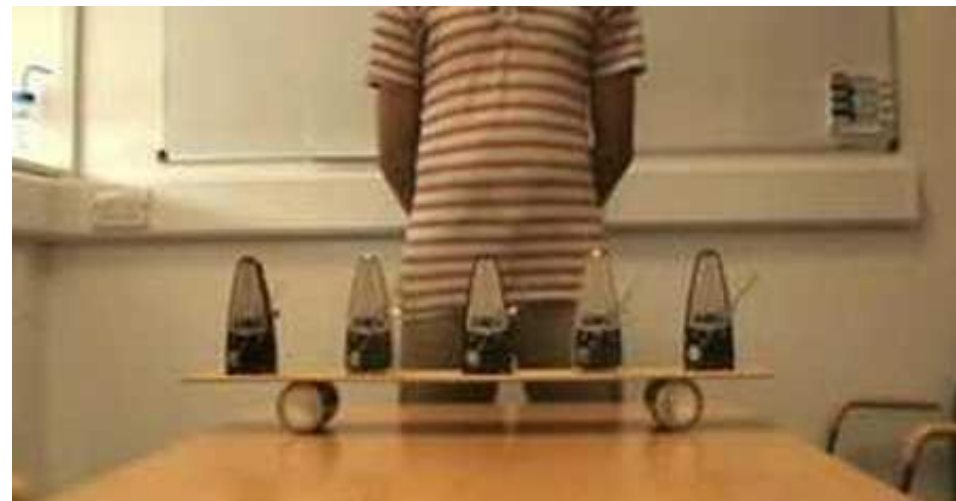


# 頻率共振現象實驗

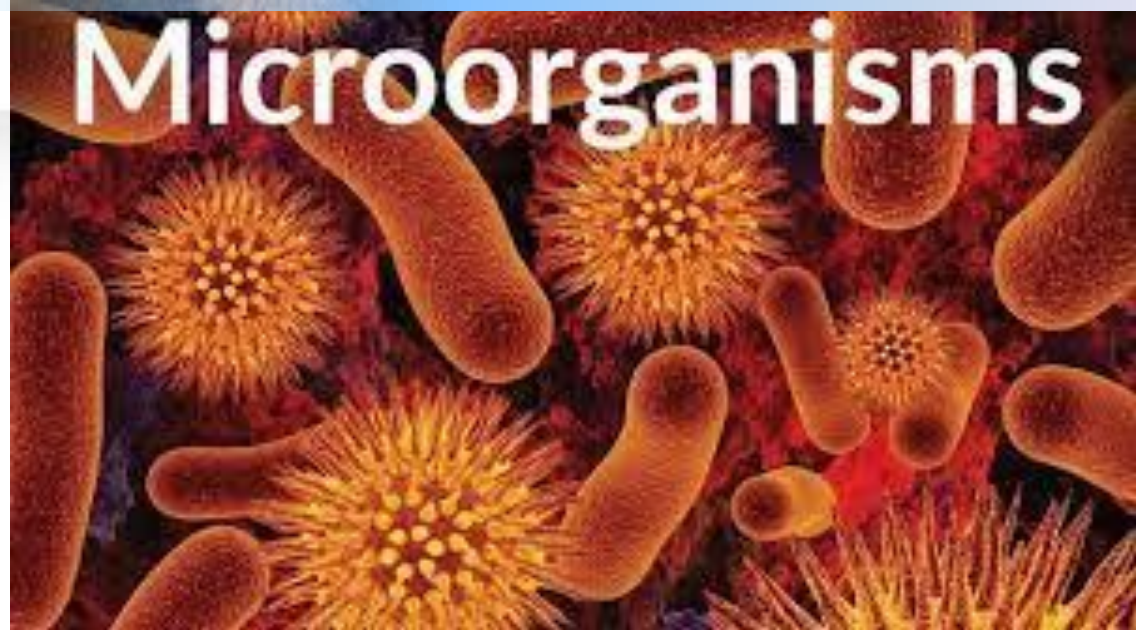
## 頻率共振玻璃實驗



## 頻率同步實驗



# 頻率治療如何對身體起作用

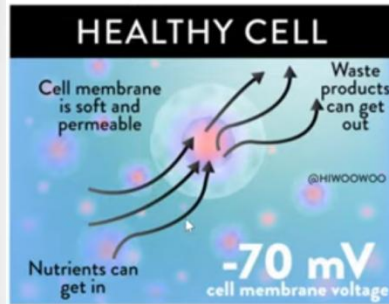


- 病原體（例如真菌、細菌、病毒、寄生蟲、變形蟲、黴菌等）具有獨特且特定的頻率。
- 如果您將相同的頻率傳遞給有害微生物，則會引起其結構應力，有害病原體就會失效或像水晶玻璃一樣簡單地爆炸。
- 殺死這些有害生物可以幫助身體自然癒合。

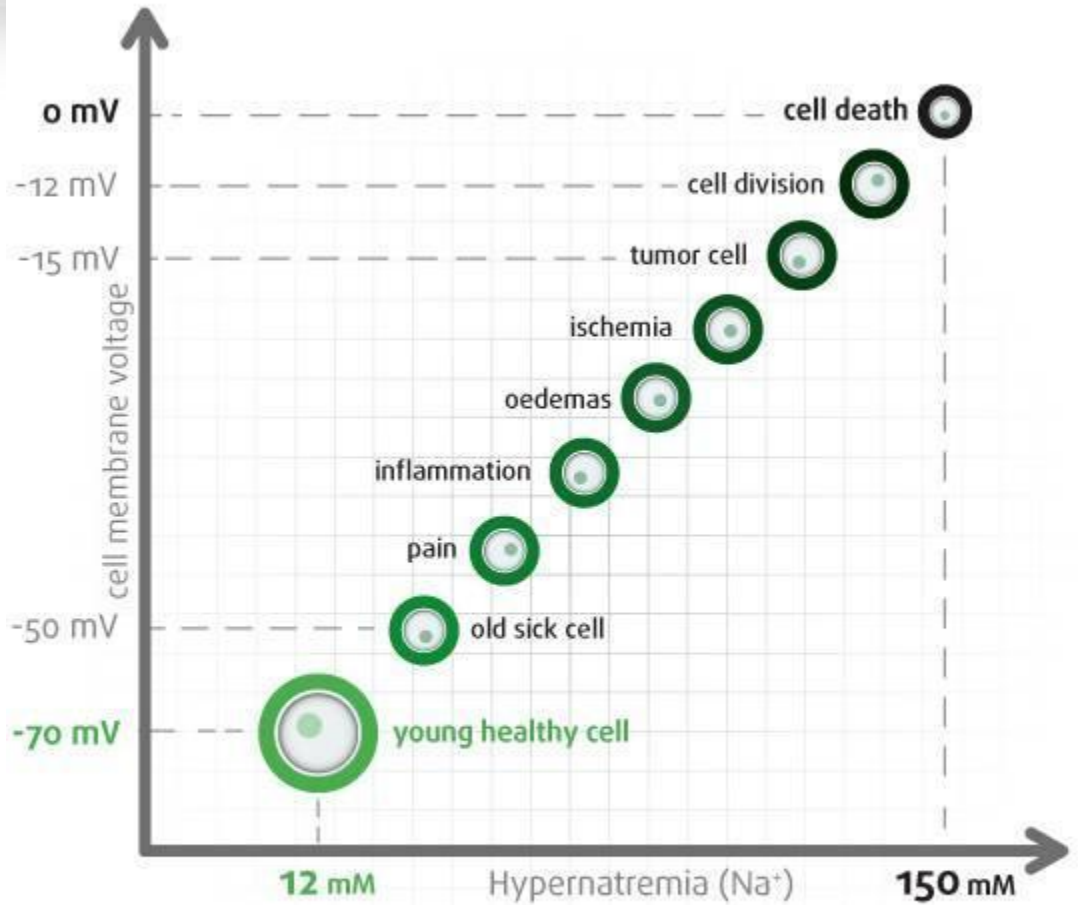
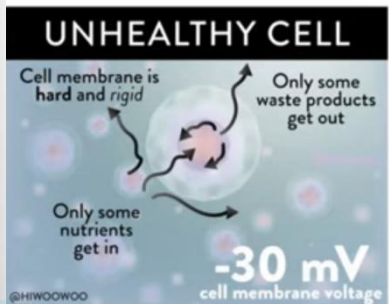
# 為細胞充電的原理



健康細胞



不健康細胞



In case of a decreased cell membrane voltage, the number of sodium ions ( $\text{Na}^+$ ) increases in the cell. This phenomenon is called hypernatremia.

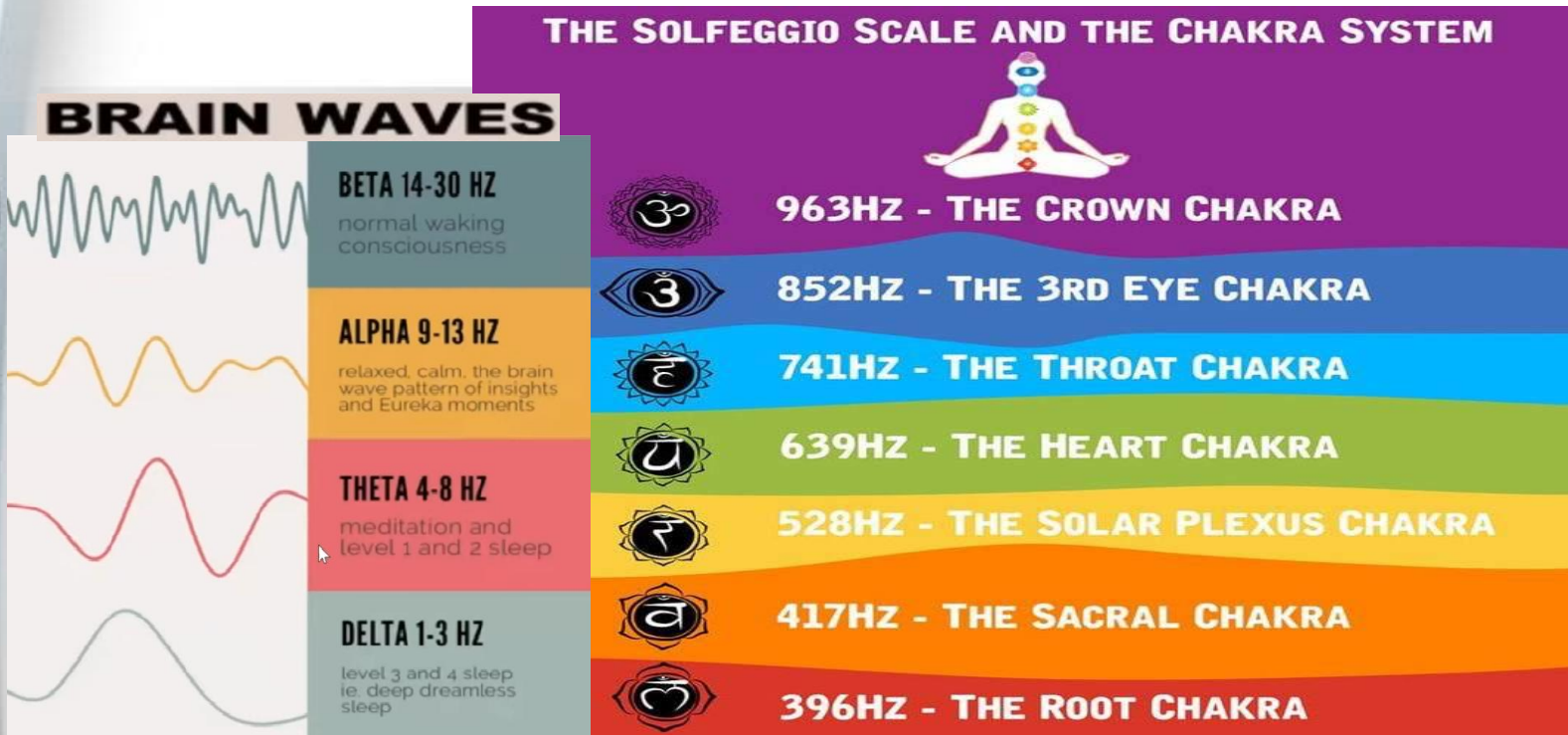
# 電流強度對電極墊片應用的分別

	<b>TENS 經皮神經電刺激</b>	<b>MENS微電流神經電刺激</b>
電流強度	使用毫安	使用微安 ( 比TENS弱1000倍 )
緩解疼痛	阻止疼痛傳遞C神經纖維	刺激受損組織的再生
副作用	一些證據表明相對較高的輸出可能會導致細胞電解	放置電極貼片時可能會引起少許發紅，10分鐘後消失
	造成約三分之一用戶的不適	沒有不適
感覺	引起輕微的刺痛感	低於感官閾值
後期處理	一關，沒有剩餘的利益	即使停止MCT治療，生物電學變化仍會繼續

資料來源：馬克·阿特金森 ( Mark Atkinson )：微痛療法可緩解患有周期性疼痛 ( 痛經 ) 的受試者。初步研究。

Spooky2-XM設備的輸出可以在 20 Vp-p、0 到 5 MHz (s/w 25MHz)  
Spooky2-GX設備的輸出可以在 20 Vp-p、100 到 40 MHz

# 頻率治療如何對心理起作用



- 人類心理(情感/意識/精神)也有一個獨特而特定的頻率。
- 如果您傳輸相同的頻率，它可能會調整/改善您的意識及精神狀態（改變甚至來自潛意識或超意識）。

# 遙距頻率治療技術原理

**\*感謝量子物理學的研究\***

- ▶ 基於頻率共振的同步 ➡ 傳遞頻率到細胞
- ▶ 使用量子糾纏技術 + 標量場 ➡ 遠程傳輸頻率到身體進行遙距治療



# 第三節

## Spooky2頻率設備的配件和應用範疇

- 微電流式
- 遙距式
- 線圈
- 冷激光

(20分鐘)





# Spooky2 的各種配件

Spooky<sup>2</sup>  
Quick Guide

Spooky2 Team  
February 2019

www.spooky2.com



Option 1

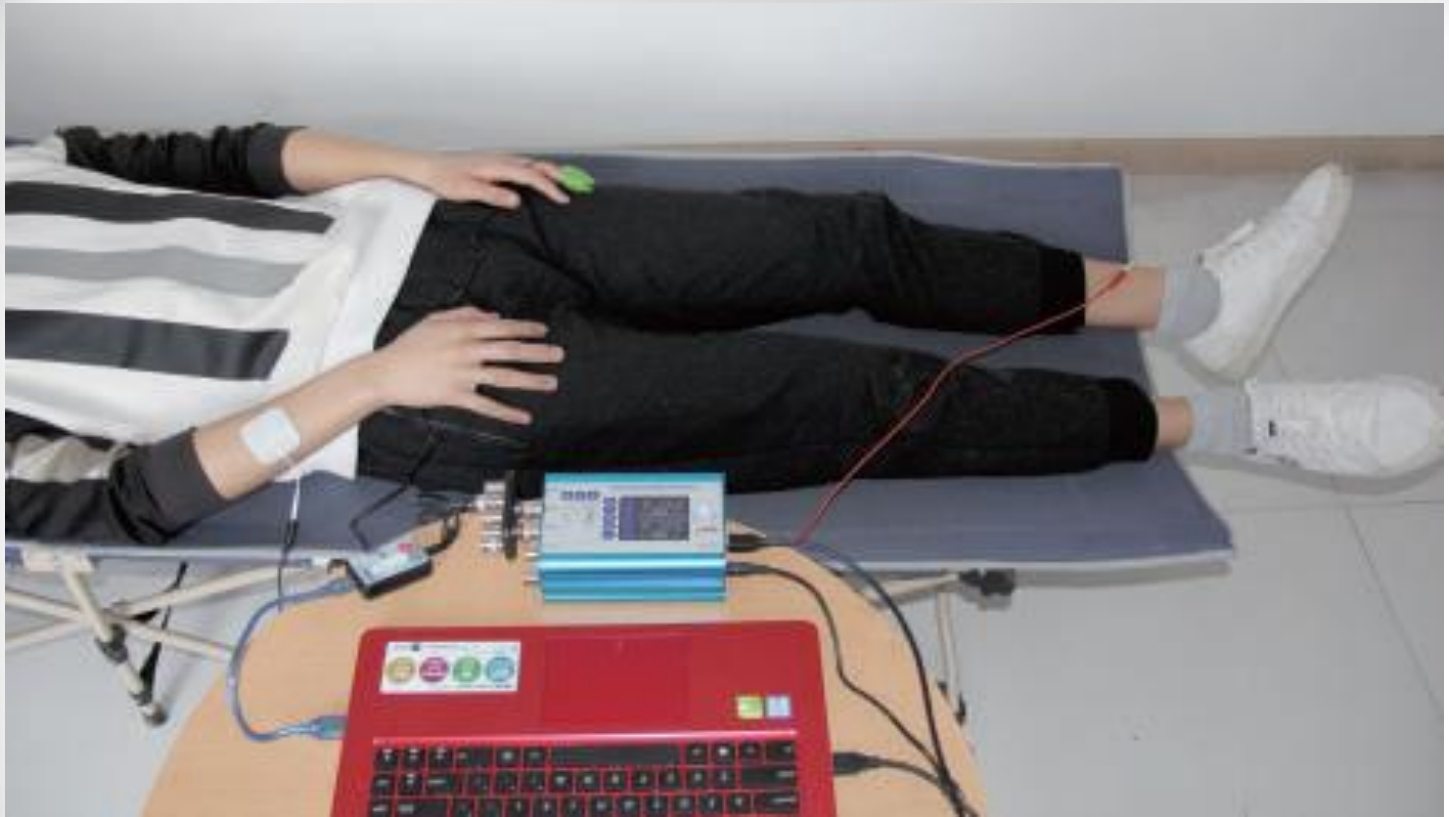


Option 2



# Spooky2 的接觸模式連接

下圖顯示了Spooky2接觸模式配件及掃描功能的連接方法。



接觸模式通常通過直接對身體施加高頻率來進行療愈。

注意: 如果您有心臟起搏器或電子植入物, 請勿使用接觸模式。

# Spooky2 遠程治療設備配件 及DNA 物質

- ▶ 指甲
- ▶ 唾液
- ▶ 頰部皮膚細胞
- ▶ 血液
- ▶ 頭髮

- 以DNA為傳輸感應載體進行頻率治療，推薦使用遠程模式，因為不受時間或地點的限制。
- 它是相對非常溫和的治療方法，它可以逐漸改善健康。



注意: 大多數情況下不會給身體帶來太大的影響，然而，也可能有強烈反應，如感覺昏昏沉沉或頭痛，可休息暫停，之後再繼續。

# Spooky2 的冷激光配件

下圖顯示了Spooky2冷激光配件的連接方法。



冷激光對疼痛、關節和神經問題、傷口和燒傷、牙齒問題、淋巴結腫脹、耳鳴、骨骼和組織再生等特別有用。

注意:不要在甲狀腺上的任何癌點上使用冷激光。

# Spooky2 的PEMF線圈配件

下圖顯示了Spooky2 PEMF線圈配件的連接方法。



PEMF可刺激細胞新陳代謝，改善所有類型的疼痛，尤其是骨骼和關節。

注意: 不要用PEMF在孕婦、非MRI宮內節育器、器官移植者、戴有心起搏器、助聽器、泵或其他電子住物/設備。

# 第四節

Spooky2軟件的操作演示  
(15分鐘)



# Spooky2軟件操作演示-PresetsTab

Spooky2 (c) John White 20210917

File Database Global Utils Credits

Presets Programs Settings Control System Internet Errors

Load Programs/Notes Presets

Programs 7

Notes Estimated Total Run Time 04:56:06

>Biofeedback  
>COVID-19  
>Cancer  
>DNA  
>Detox  
>Environmental  
>Frequency Sweeps  
>Heal  
>Miscellaneous  
>Morgellons and Lyme  
>Newport Adaptations  
>Radionics  
>Shell (Empty) Presets  
>User

Detox 4 Toxins Throughout the Body (CAFL)  
Detox 3 Toxins in the Kidneys and Liver (PROV)  
Detox 2 Parasites in the Intestines (CAFL)  
Detox 1 Toxins in the Intestines (CAFL)  
Lymphangitis (CAFL)  
Streptococcus Pyogenes (CAFL)  
Lymphs and Detox (PROV)

This detox should be run in the order per presets as they are designed to detox the body in an effective systematic way over time.

This is a gentle generic detox designed to remove toxins throughout the body without a herxheimer effect (feeling lousy for days).

Blessings

Spooky Remote provides a convenient way to send frequencies from any distance. Sandwich your DNA in some paper tape and place inside Spooky Remote. Choose the programs you wish to run, and start the generator. DNA Entanglement transfers the frequencies directly to your DNA. The Preset has been designed to loop continuously until stopped. Connect your Spooky Remote-BN to the 'BN' port of Spooky Boost.

Presets to Chain

Presets/Chains 1

Detox Maintenance (R) - JK

GC:5 RE:0 GE:0 - Spooky2 (c) John White 20210917 Screen shot

Spooky<sup>2</sup>

# Spooky2軟件操作演示-Program Tab

Spooky2 (c) John White 20210917

File Database Global Utils Credits

Presets Programs Settings Control System Internet Errors

coron

Program Name	Duration	Type
Coronavirus BtRs-BetaCoV/YN2018B	3 mins	DNA
Coronavirus BtRs-BetaCoV/YN2018C	3 mins	DNA
Coronavirus BtRs-BetaCoV/YN2018D	3 mins	DNA
Coronavirus BtRt-BetaCoV/GX2018	3 mins	DNA
Coronavirus BtSk-AlphaCoV/GX2018A	3 mins	DNA
Coronavirus BtSk-AlphaCoV/GX2018B	3 mins	DNA
Coronavirus BtSk-AlphaCoV/GX2018C	3 mins	DNA
Coronavirus BtSk-AlphaCoV/GX2018D	3 mins	DNA
Coronavirus HKU1 #1	60 mins	DNA
Coronavirus HKU1 #2	33 mins	DNA
Coronavirus HKU15	6 mins	DNA
Coronavirus NL63 #1	60 mins	DNA
Coronavirus NL63 #2	27 mins	DNA
Coronavirus Neorovirus (PMT-DFE1/DF2/2011)	3 mins	DNA

Database

- ALT
- BFB
- BIO
- CAFL
- CUST
- DNA
- ETDLF
- HC
- KHZ
- MW
- PROV
- RIFE
- RUSS
- SD
- VEGA
- XTRA

0 / 211

Loaded Programs

- Detox 4 Toxins Throughout the Body (CAFL)
- Detox 3 Toxins in the Kidneys and Liver (PROV)
- Detox 2 Parasites in the Intestines (CAFL)
- Detox 1 Toxins in the Intestines (CAFL)
- Lymphangitis (CAFL)
- Streptococcus Pyogenes (CAFL)
- Lymphs and Detox (PROV)

Encyclopedia Entry for coron :

**Coronary angiography.** Coronary angiography is often done along with cardiac catheterization. This is a procedure which measures pressures in the heart chambers. Before the test starts, you will be given a mild sedative to help you relax. An area of your body (the arm or groin) is cleaned and numbed with a local numbing medicine (anesthetic). The cardiologist passes a thin hollow tube, called a catheter, through an artery and carefully moves it up into the heart. X-ray images help the doctor position the catheter. Once the catheter is in place, dye (contrast material) is injected into the catheter. X-ray images are taken to see how the dye moves through the artery. The dye helps highlight any blockages in blood flow. The procedure most often lasts 30 to 60 minutes. Coronary angiography.

You should not eat or drink anything for 8 hours before the test starts. You may need to stay in the hospital the night before the test. Otherwise, you will check in to the hospital the morning of the test. You will wear a hospital gown. You must sign a consent form before the test. Your health care provider will explain the procedure and its risks. Tell your provider if you: Are allergic to any medicines or if you have had a bad reaction to contrast material in the past Are taking Viagra Might be pregnant.

In most cases, you will be awake during the test. You may feel some pressure at the site where the catheter is placed. You may feel a flushing or warm sensation after the

Options

Option	Value
Repeat Each Frequency	1
Repeat Each Program	1
Repeat Sequence	0
Repeat Chain	1
Dwell Multiplier	1
Frequency Multiplier	1

Out 1 Out 2

Run 0 0 Hz 0 Secs Between Freq

Remove Duplicate Frequencies

Apply Tissue Factor to DNA Frequencies

Apply Disable Factor to Harmful MW Substances

Do NOT sort frequencies

MicroGen

Blood Purifier

Zapper

Low-Power Cable

High-Power Cable

Dwell 180

Estimated Total Run Time 04:56:06

GC:5 RE:0 GE:0 - Spooky2 (c) John White 20210917 Screen shot

# Spooky2



# Spooky2軟件操作演示-SettingTab

Spooky2 (c) John White 20210917

File Database Global Utils Credits

Presets Programs **Settings** Control System Internet Errors

Signal Settings

Out 1 Out 2

Duty Cycle 50 50 %   Modulate Out 1

Amplitude 20 20 V

Offset 0 0 %

Phase 0 0 °

Gating

4 Hz Gate  Out 1

125 mS On 125 mS Off  Out 2

Wobble

Amplitude Wobble Disabled 0 % 16 Steps

Frequency Wobble Disabled 0 % 16 Steps

Harmonic Wobble None

Schedule

Run From Midnight to Midnight

Start In 0 Days 0 Hours 0 Minutes

After 0 Hours  Stop  Advance To Next Preset

Contact Mode Options

Ramp Up 4 V / Sec

Ramp Down 4 V / Sec

Reduce Amplitude < 10 kHz

Startup Options

Manual Start

Auto Start

Auto Resume

Frequency Limits (Hz)

Out 1 Out 2

> 0 0

< 0 0

Octave Octave \* = Experimental

Output Control

Out 1 = 0 X 0 ) + 0 Hz

Swap Waveform Every 0 Seconds

Out 2 = (Out 1 X 1 ) + 0 - Hz

Out 1 fixed at 0 Hz. Out 2 = Abs ( Out1 - F1 ) Hz

Out 2 Follows Program Frequency

Out 2 Runs Every Second Frequency  Swap Out 1 And Out 2

Waveform Setup

1	2	Waveform	WCM	Spike Length	Ratio	Spectrum %
<input type="checkbox"/>	<input type="checkbox"/>		1	0	2	0
<input type="checkbox"/>	<input type="checkbox"/>		1	0	2	0
<input type="checkbox"/>	<input type="checkbox"/>		1	0	2	0
<input type="checkbox"/>	<input type="checkbox"/>		1	0	2	0
<input type="checkbox"/>	<input type="checkbox"/>		8	0	2	0
<input type="checkbox"/>	<input type="checkbox"/>		8	0	2	0
<input type="checkbox"/>	<input type="checkbox"/>		16	0	2	0
<input type="checkbox"/>	<input type="checkbox"/>		16	0	2	0
<input type="checkbox"/>	<input type="checkbox"/>	Colloidal_Silver	1	0	2	0
<input type="checkbox"/>	<input type="checkbox"/>	Sine	1	0	2	0

Follow Out 1  ~

Spike  +

Inverse  -

Count 0

Write Waveforms

Graph Display

MN

BN

Audio Options

Notify When Zero Hz

Notify When Program Advances

Restore Defaults

F2 = F1 X 1 Hz 0 °

Add F1 to F2

GC:5 RE:0 GE:0 - Spooky2 (c) John White 20210917 Screen shot

Spooky2

# Spooky2軟件操作演示-Control Tab

Spooky2 (c) John White 20210917

File Database Global Utils Credits

Presets Programs Settings Control System Internet Errors

### Generators

Overwrite Generator

17	18	19
2%	49%	100%

4  
50%  
12  
0%

### Generator 17 Detox Maintenance (R) - JK

Start Pause Hold Amplitude Wobble Frequency Wobble Stop

2.4	5.8	6.3	7.8	20	26	35	60	72	125
-----	-----	-----	-----	----	----	----	----	----	-----

Dwell 62 Total : 78  
Step 4 Total : 236  
Preset 1 Total : 1  
Age Factor 1

Frequency Adjustment +/- 1 Hz

### Biofeedback Scan

Log Name

Start Frequency	76000	Hz
Finish Frequency	152000	Hz
Initial Step Size	20	Hz
	.025	%
Decimal Places	0	
Max Hits to Find	10	
Samples/Step	10	
Loops	1	1
Start Delay	300	
Threshold	0	
Est. Duration	-	

VG 0%

### Detect

Max  Min  Change

BPM  
 HRV  
 Angle  
 Current  
 Angle + Current

### After Scan

Run Hits  
 Continue Refining Hits

Run on Gen	0
Run Cycles	4

### Calculate Using

Running Average  
 Peak

Single Scan  
 Grade Program

BPM	0
HRV	0
VI Angle	0
Current	0

Scan Analyze Analyze + Baseline  Baseline Before BFB

### Generator Output

	Out 1	Sync	Out 2
Frequency	7.8		7.8
Waveform	Square H-Bomb		Inverse
Duty Cycle	50%		50%
Amplitude	20v		20v
Offset	0%		0%
Phase	0 Degrees		0 Degrees
Angle	-		-
Current	-		-

### Reverse Lookup

Include Harmonics  
 Include Sub-Harmonics

Octave .25 % Tolerance  
Include 0 Hz In Search

### Special Functions

Load GX Paste  
Copy Erase  
Reset

68.5801  
17.71

Spooky2



# 頻率治療的注意事項

- ▶ 雖然頻率治療可以改善您的健康，但它不被認可替代傳統治療。如果您有任何醫療問題，請諮詢您的醫生。
- ▶ 當使用spooky2令你身體感到不適，例如出汗、頭痛、頭暈、關節痛或疲勞等感覺，稱為**赫克斯海默反應**(Herxheimer reactions)，您可以暫時停止頻率治療，休息幾個小時或幾天回復正常，然後再試。



**CAUTION**

# Q&A

# 問題討論



- ▶ 保健是終身工作及責任
- ▶ 願Spooky2能帶給你們健康

# 參考網頁

- ▶ [The Ultimate Guide to Rife Machine](#)
- ▶ <https://www.spooky2.com/downloadspage/>
- ▶ [https://www.spooky2-mall.com/?wpam\\_id=249](https://www.spooky2-mall.com/?wpam_id=249)
- ▶ <https://www.spooky2scalar.com/ref/58/>
- ▶ <https://www.heawea.com/?ref=80>
- ▶ <https://www.miramate.com/?ref=56>
- ▶ <https://www.spooky2academy.com/courses/all-courses/>
- ▶ <https://www.facebook.com/groups/spooky2>
- ▶ <https://www.facebook.com/groups/spooky2success>
- ▶ <https://www.facebook.com/groups/spooky2pets>
- ▶ <https://www.spooky2.com/forums>



# 聯繫查詢

Whatsapp +86 151 50697857  
Wechat 微信號 penny-yu1992  
SAMA@spooky2-mall.com

**11 月 11 日前聯繫購買Spooky  
可獲 5%折扣優惠**

**謝謝！**

**Spooky<sup>2</sup>**